

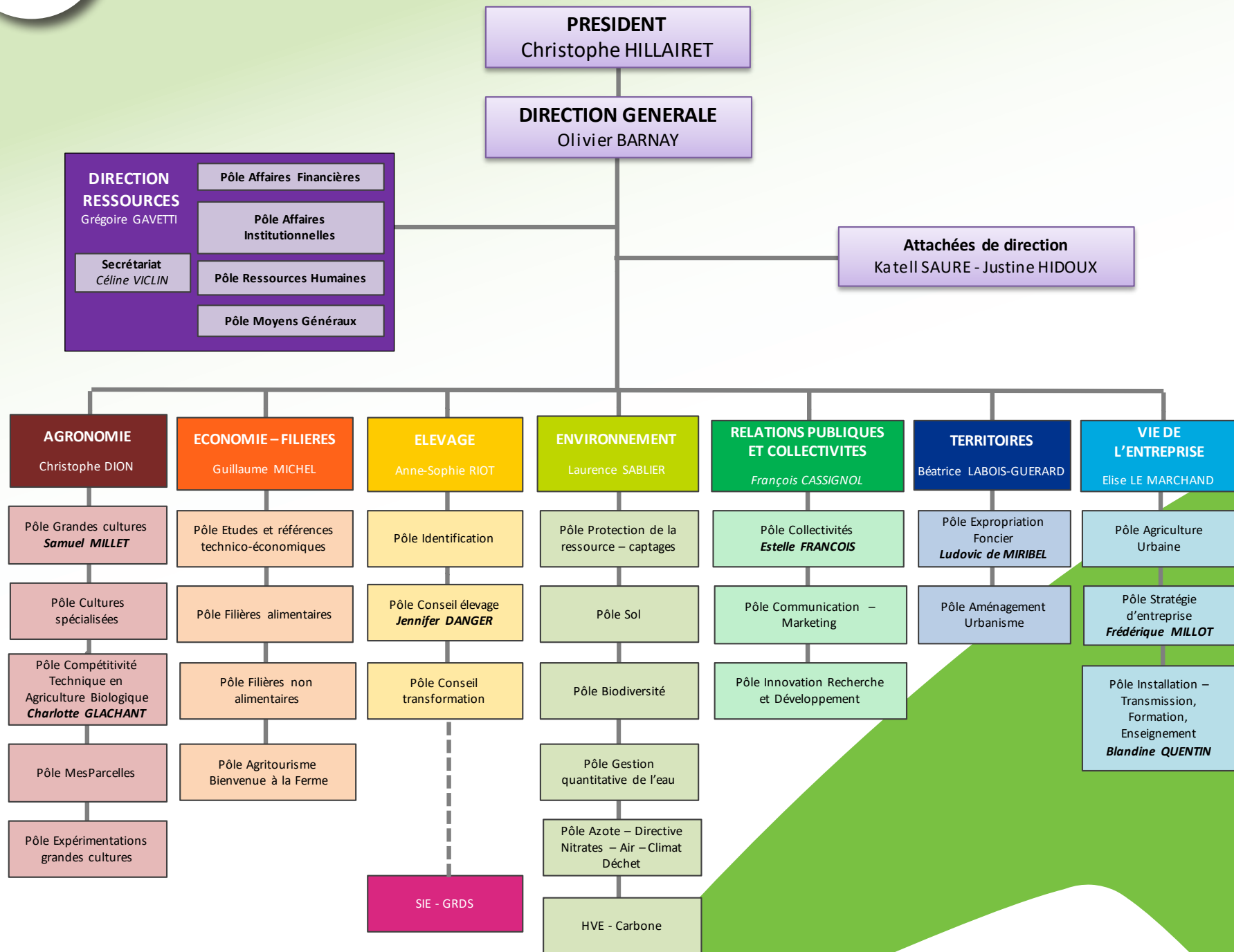


**CHAMBRE
D'AGRICULTURE**
DE RÉGION ILE-DE-FRANCE

ORGANIGRAMME



ORGANIGRAMME GENERAL





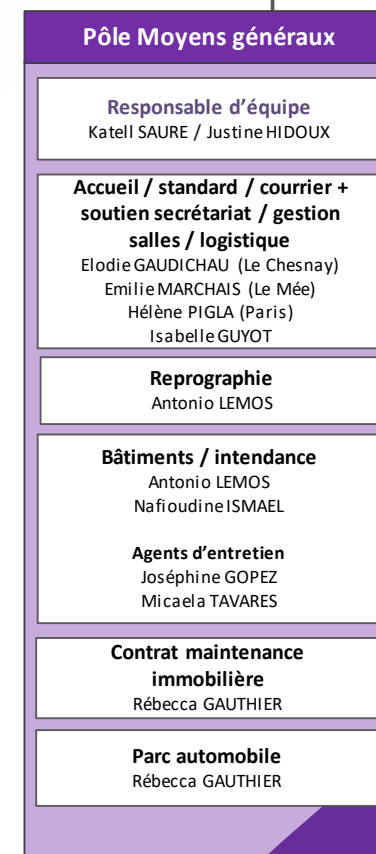
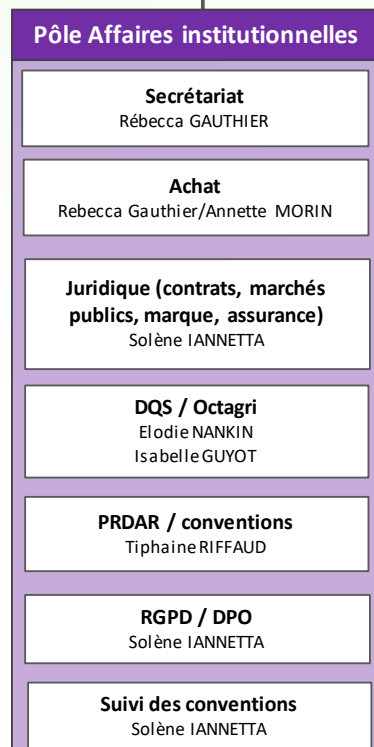
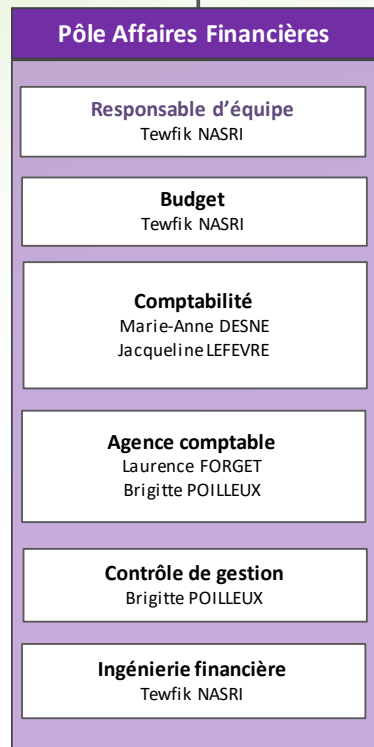
DIRECTION RESSOURCES

DNSI (Direction Nationale des Systèmes d'Informations) *
Laurent ROBERT
Sébastien PIVRON

SIG
Guillaume FLAMME

Directeur Ressources
Grégoire GAVETTI

Assistante de direction
Céline VICLIN

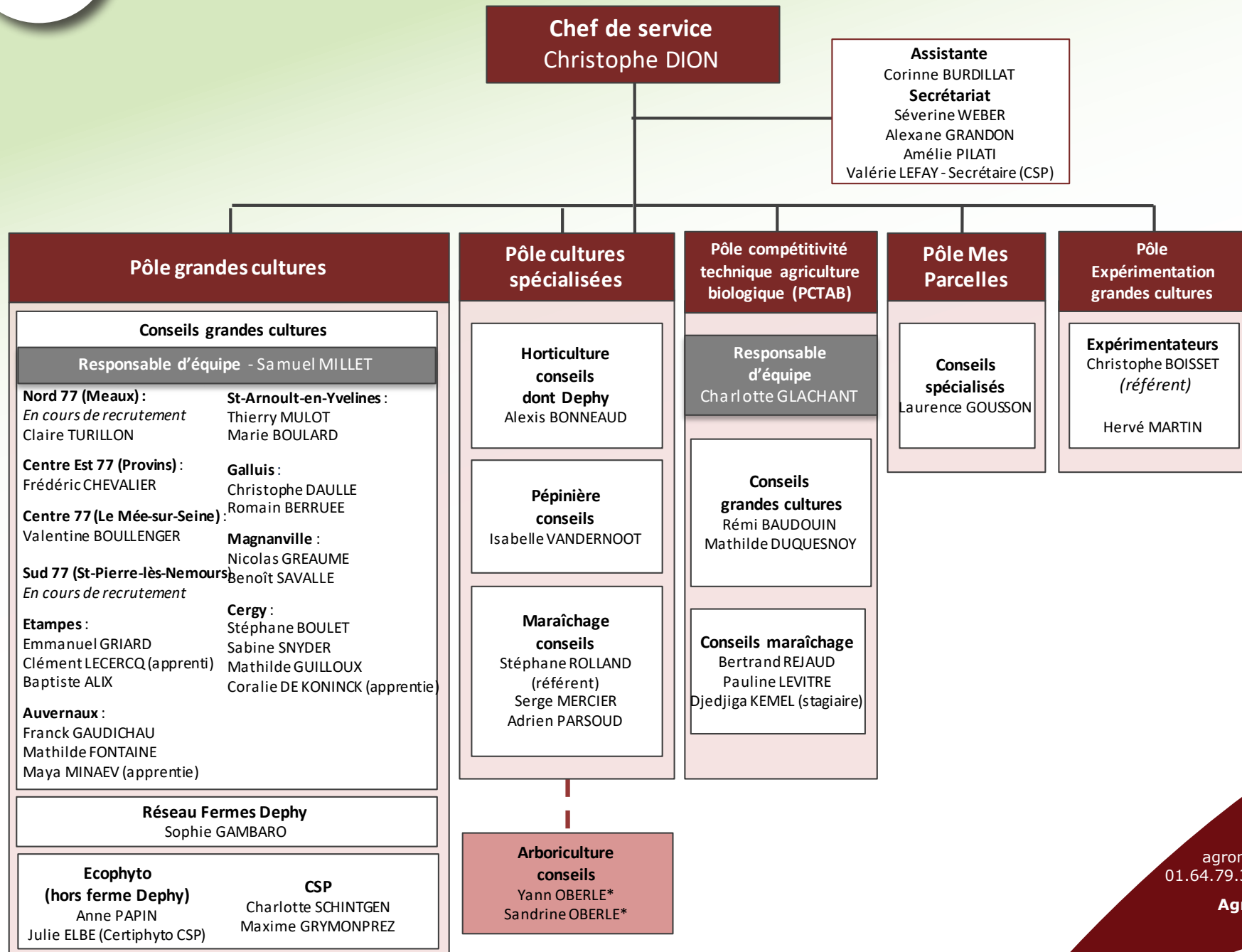


CONTACTS

Accueil : 01 39 23 42 00
accueil@idf.chambagri. fr



SERVICE AGRONOMIE



* entreprise Conseilyo

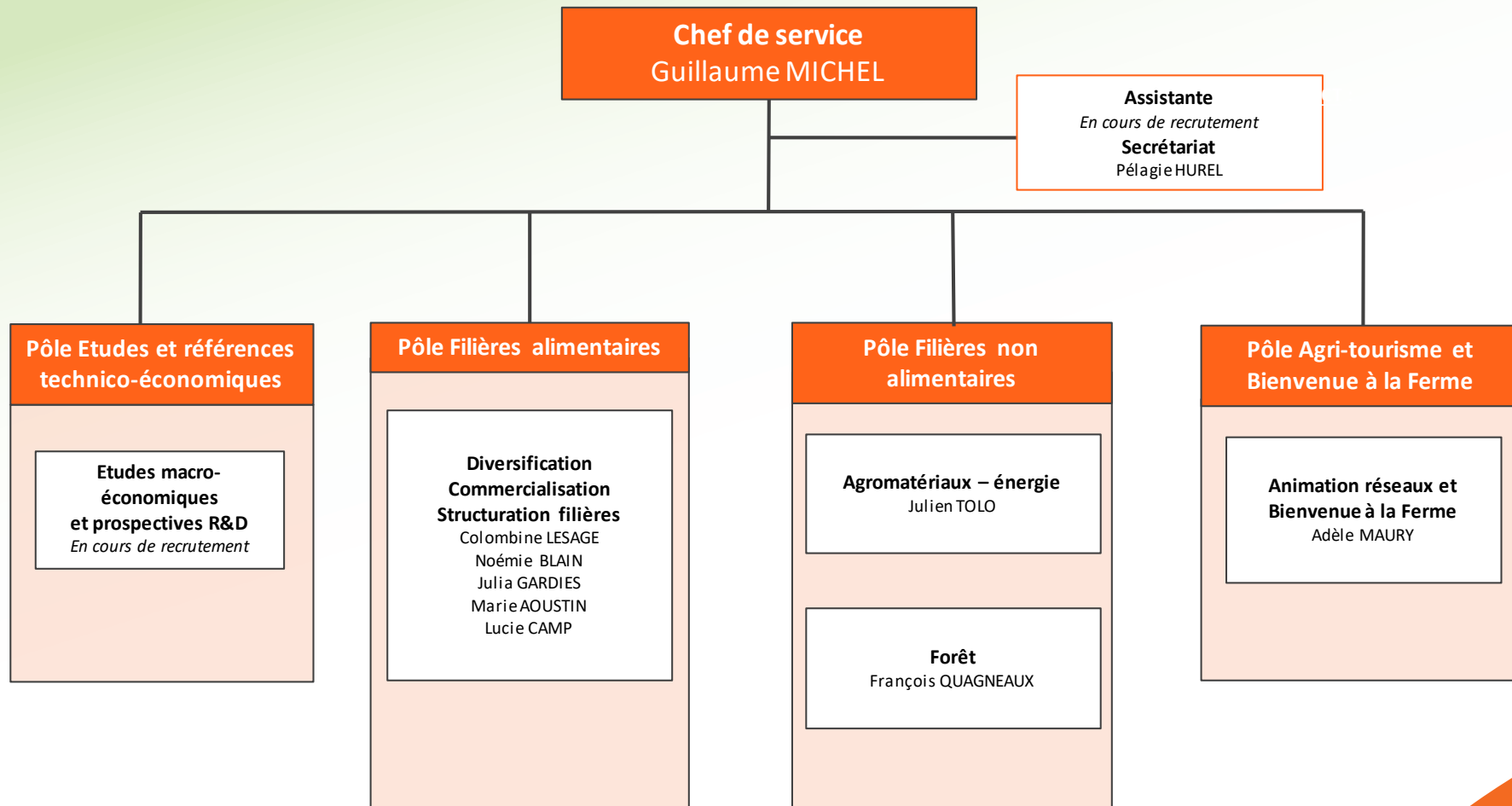
CONTACTS

Secrétariat :
agronomie@idf.chambagri.fr
01.64.79.30.75 - 01.39.23.42.40

Agriculture biologique :
pctab@idf.chambagri.fr



SERVICE ECONOMIE - FILIERES

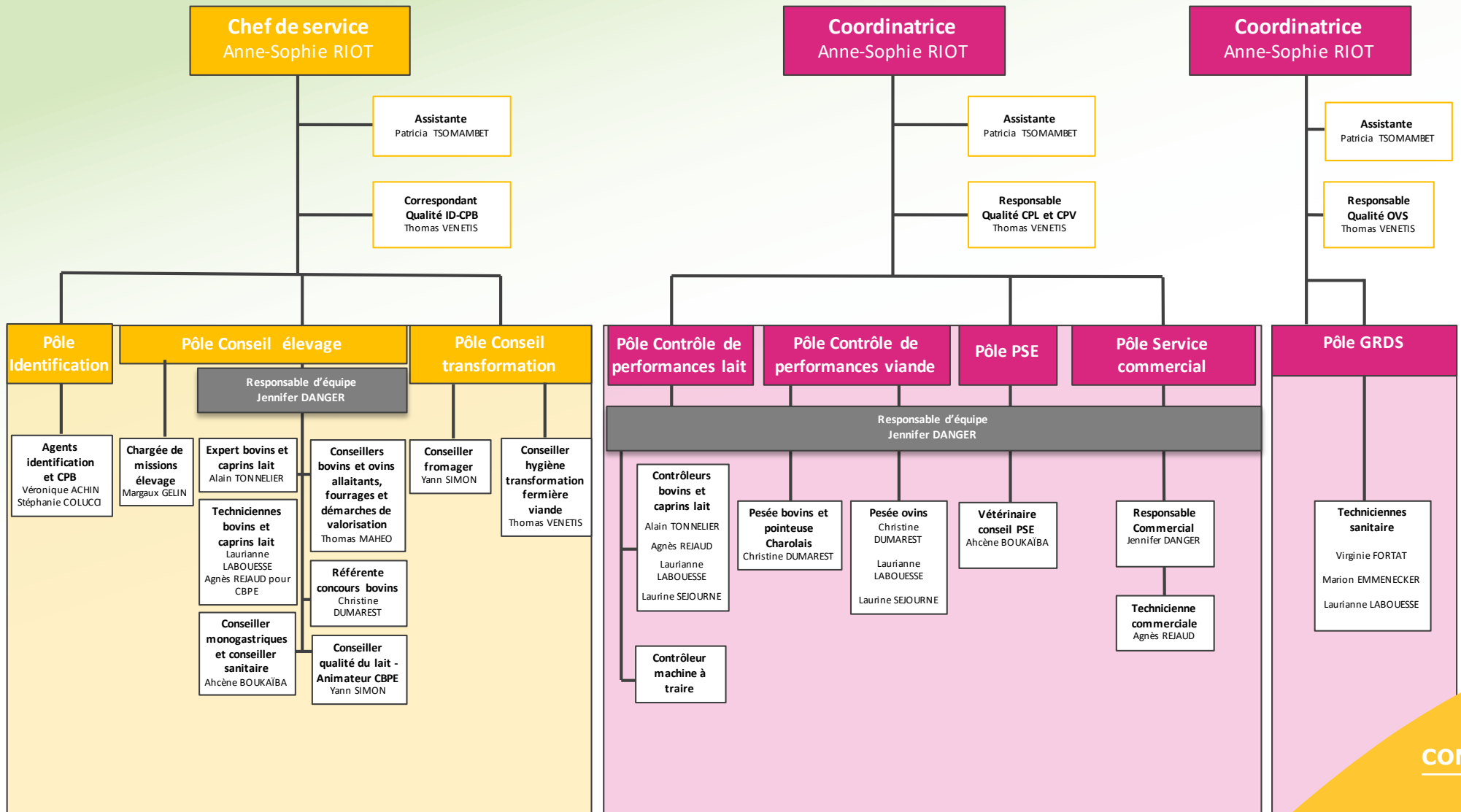


CONTACT

Secrétariat :
service-economie.filières@idf.chambagri.fr
01 64 79 30 69



SERVICE ELEVAGE

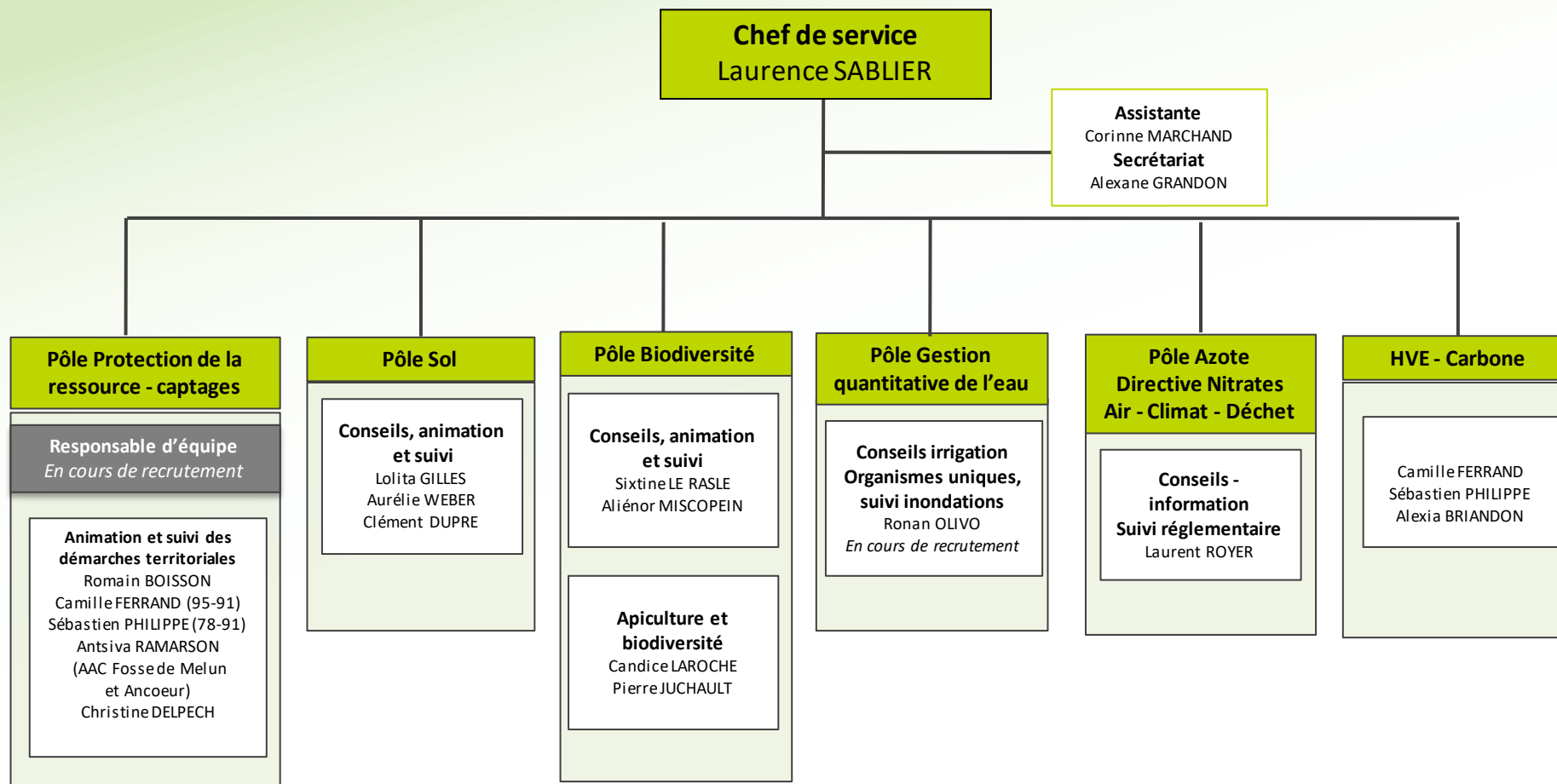


CONTACT

Secrétariat :
 elevage@idf.chambagri.fr
 01 64 79 30 08



SERVICE ENVIRONNEMENT

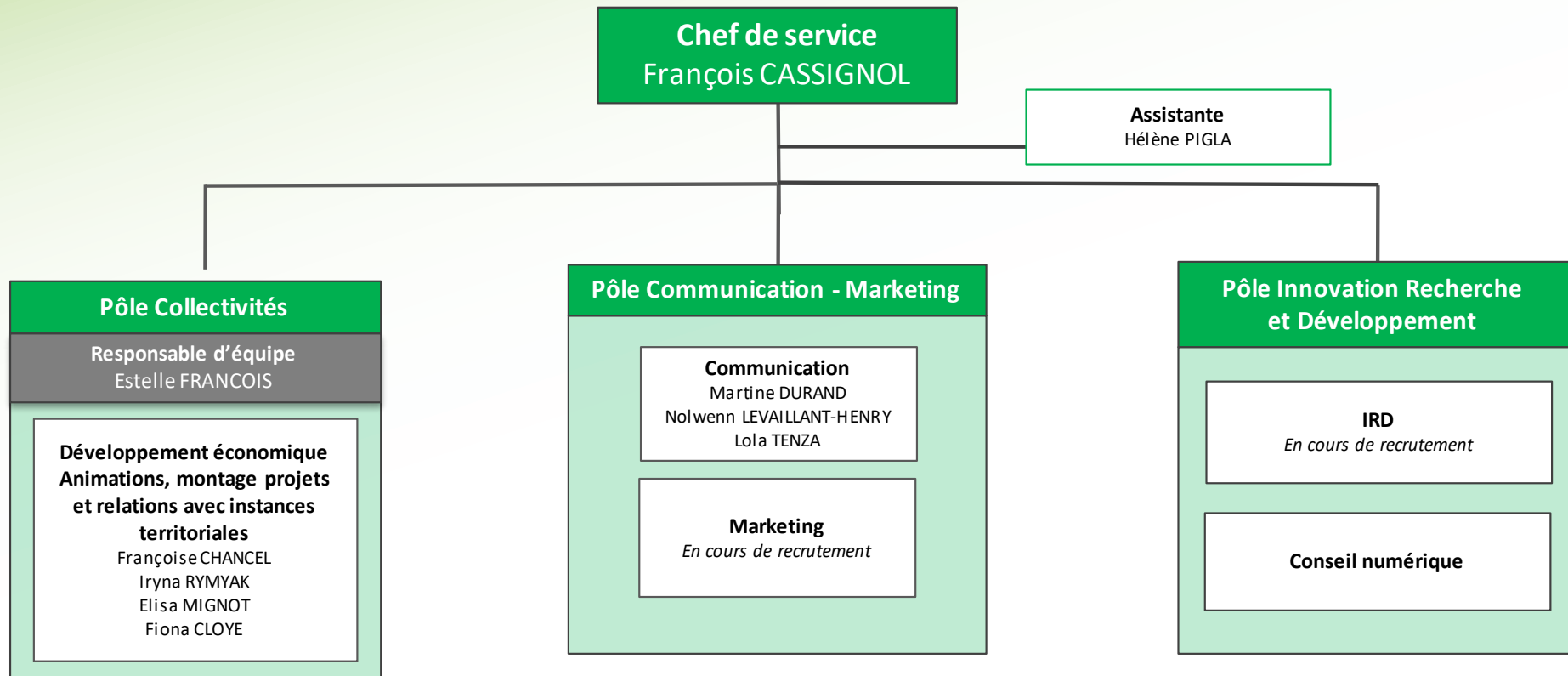


CONTACT

Secrétariat :
environnement@idf.chambagri.fr
01 39 23 42 26
01 64 79 30 63



SERVICE RELATIONS PUBLIQUES et COLLECTIVITES



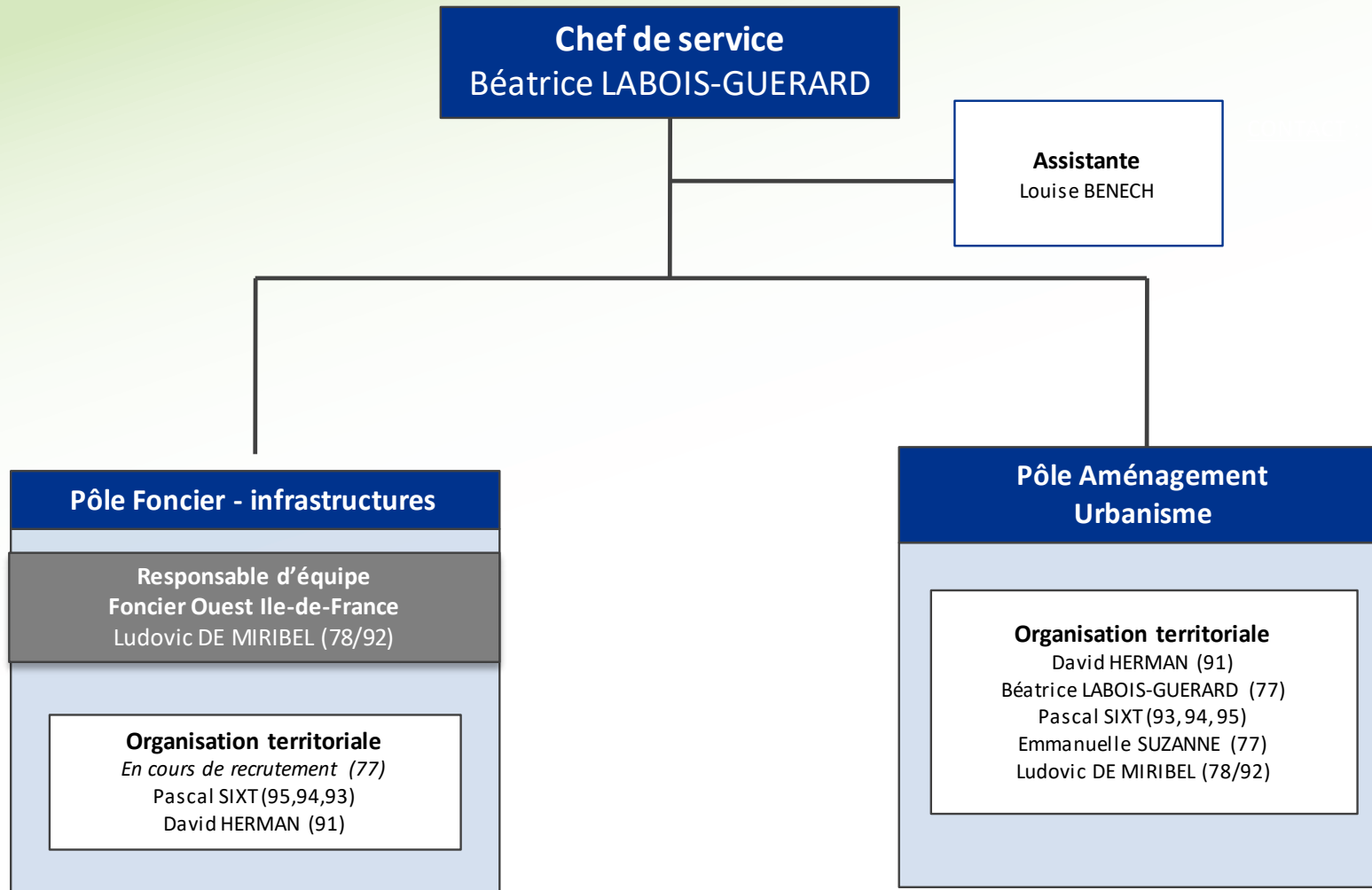
CONTACT

Secrétariat : 01 42 36 73 51
Communication : 01.39.23.42.16
communication@idf.chambagri.fr

Innovation : innovation@idf.chambagri.fr



SERVICE TERRITOIRES

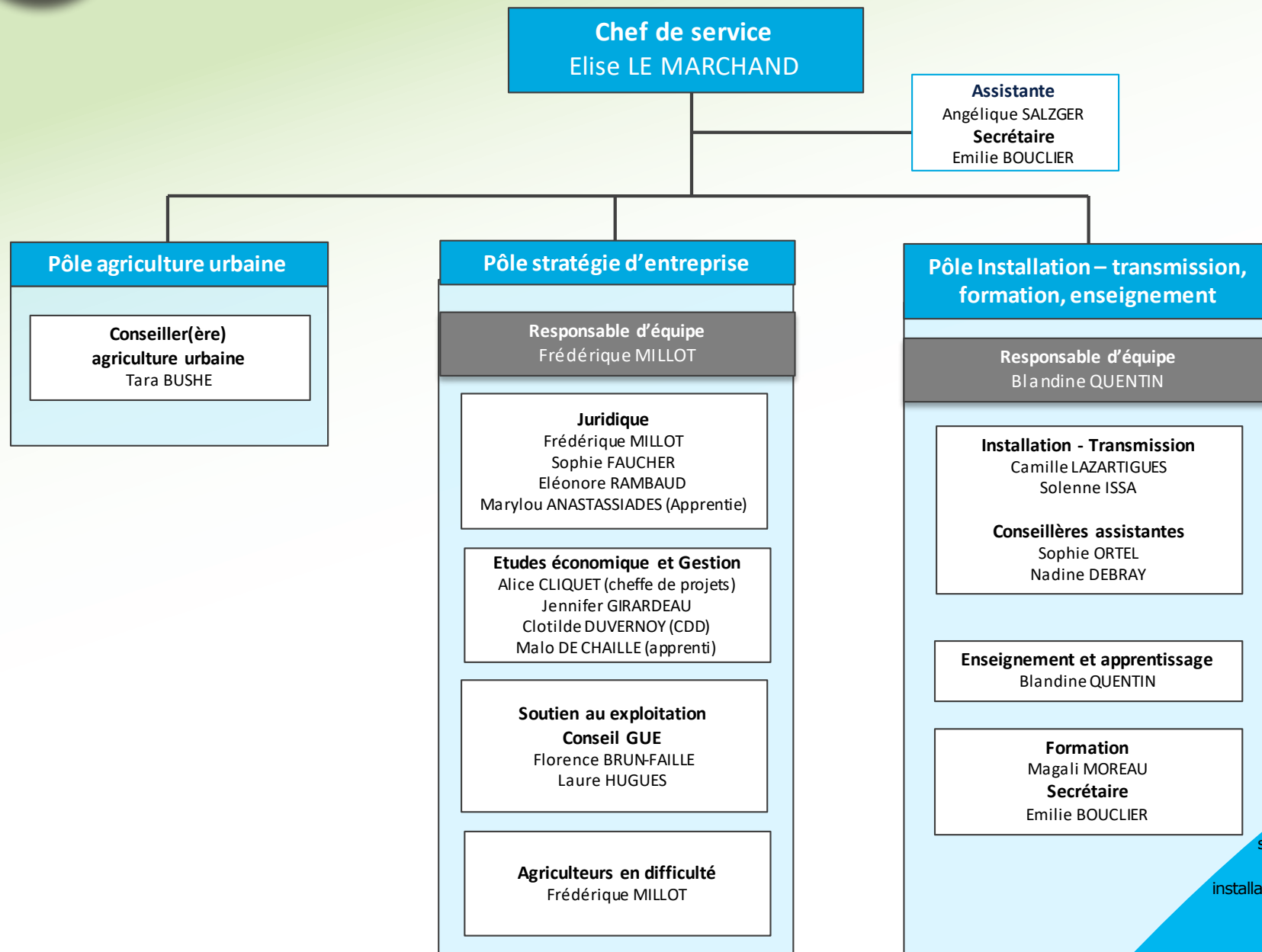


CONTACT

Secr tariat :
territoires@idf.chambagri.fr
01 64 79 30 71



SERVICE VIE DE L'ENTREPRISE



CONTACTS

Service : 01 64 79 31 00
service-entreprise@idf.chambagri.fr

Installation-transmission :
installation-transmission@idf.chambagri.fr

Conseil juridique :
juridique@idf.chambagri.fr

Dispositifs d'aides :
dispositifs-aides@idf.chambagri.fr

Formation : formation@idf.chambagri.fr